



Photographic Retouching and Restoration Adobe Photoshop

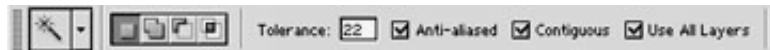
Removing Unwanted Harsh Shadows

Removing unwanted harsh shadows from images using Adobe Photoshop will employ several sophisticated techniques for a final seamless effect. Methods may include creating selections using the Magic Wand and Lasso tools, recreating areas with the Clone Stamp, Patch tool, and Copy/Paste techniques, and inflicting density adjustments to localized areas with the Burn Tool, Dodge Tool, and Curves.

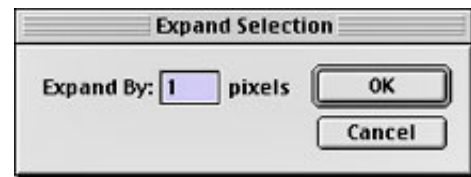
Attention to detail and technique is crucial in acquiring a seamless effect. Changes to localized areas may take some experimenting to obtain the desired results. It is best to operate with the texture and detail that is already provided in the image. This technique is not always possible so a recreation of a specific area may have to be employed. This process will also prove to be anything but simple and straight forward.

1. Create a selection of the problem area using one of several selection tools. Start by clicking with the **Magic Wand** in the area of the desired change (a selection tolerance can be adjusted in the options panel). Other methods of selection may include the **Lasso** tools if the desired effect is not obtained immediately with the Magic Wand. A combination of selection tools may have to be employed to refine the selection area.

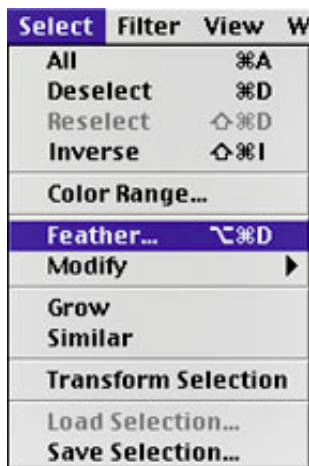
* Hold the shift key to add to a current selection, hold the alt/option key to subtract from a current selection.



2. Once the selection area has been obtained, it is important to refine the edges to hide any evidence of an adjustment area. Do this by first navigating to the **Selection Menu** and **Modify>Expand** the current selection by 1 pixel.



3. Go to the **Selection Menu** again and **Feather** the edges of the current selection by 1 pixel. Doing this will provide the edge of the selection area with a more gradual and softer change to the edge.

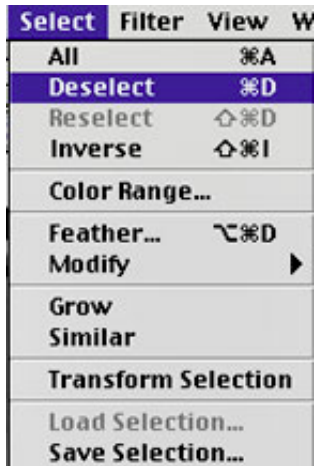


4. Adjust the density of the image selection area by using the **Dodge** tool (adjust the exposure in the options panel). Simply brush over the area and a lightening effect should occur in the designated area.





5. After adjustments have been made, **Deselect** the current active selection by navigating to the **Select Menu**. The image adjustment edges will now be slightly detectable.



6. The **Clone Stamp** can now be employed to recreate the edges of the selected area. When recreating areas, it is a good idea to create a separate blank layer. This way the recreation adjustments will not destroy the original image information. Be sure to click the **Use All Layers** checkbox in the Clone Stamp options palette.

* The Clone Stamp works best when defining from similar areas in tone and shade (usually areas near the problem work best).

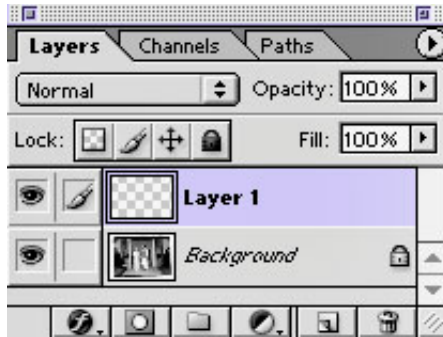


7. In order to create subtle lines and shapes that may be lost in this process, it is sometimes necessary to copy/paste an adequate area using some type of selection technique. First, create an active selection then go to the **Edit Menu** to **Copy** the active selection area.

* The active selection area will be copied to an invisible clipboard inside the program.



8. Go to the **Edit Menu** and **Paste** the newly copied area to the image (a new layer is created for each paste that is executed).



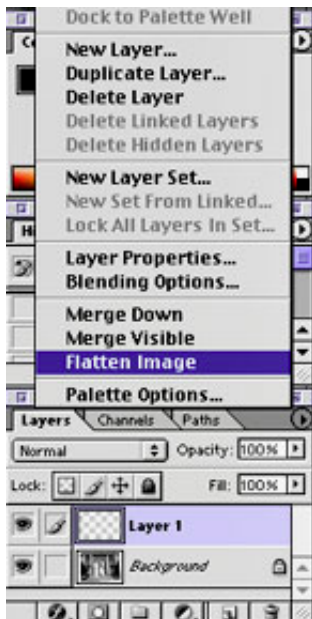
9. Move and position the new layer to the area that needs to be covered/recreated. This is done by using the **Move** tool in conjunction with the **Free Transform** located within the **Edit Menu**.





10. When finished with image recreation, it is best to save a working file with all layers intact for possible future adjustments. It is also a good idea to save a flattened print file when sending information to a printer. A flattening of the layers is accomplished by clicking the triangle on the layers palette.

* Flattened images require less processing time for the printer due to the reduced file size.



Example 1:

© 2002-2006 by Tonal Range, L.L.C.. All Rights Reserved.
Copying of this material is strongly encouraged for the benefit of education.