



Digital Photo Imaging Photoshop/Mac Classic Printing

Photoshop Procedures for Epson Photo ink jet printers using Power Macintosh

Produce accurate photographic prints from the Epson Photo 780, 820, 870, 2200, 2000P and other models using several types of Epson papers. Follow these exact steps in order to alleviate any potential problems with color casts and restricted tonal ranges.

Epson papers are the best media to use due to several problems encountered with certain types of papers not accepting inks properly. This leads to ink droplets that pool and dry on the surface rather than absorbing into the paper. The image will also appear low quality due to a loss in sharpness and detail. Kodak papers are notorious for this type of outcome.

Epson Photo Paper, Semi-Gloss, Archival Matte, Photo Luster, Velvet Fine Art and Watercolor are all high-grade papers. The Archival Matte paper will preserve dye based inks for a longer period of time (25 years), compared to the Photo Paper (7 years). For other ink jet paper life expectancy consult:

Taking Care of Your Epson Photographs

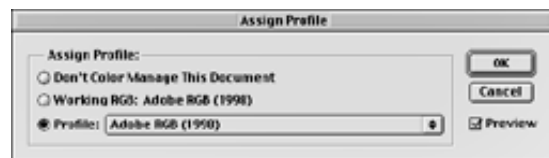
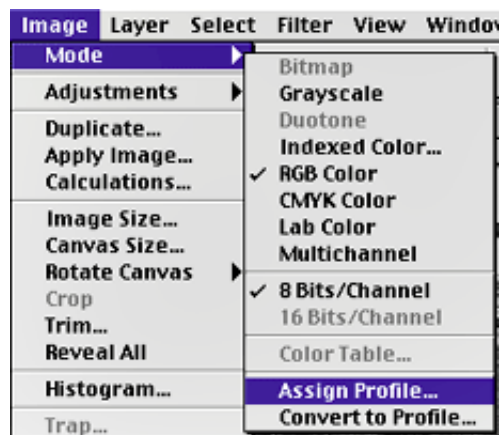
<http://wilhelm-research.com>

*Finalize your image document in Adobe Photoshop using the Unsharp Mask filter. Be sure to check the highlight and shadow areas for adequate detail. Any image area that registers at a value of 255 in the highlights will lack any printer detail. Detail will also be lost in shadow areas if the black point of the image registers at a value of 0.

For Best Results Use Epson Papers:

1. Standardize the color space of the document by embedding an ICC profile to the image. First, navigate to the **Image>Mode>Assign Profile** menu. In the **Assign Profile** window, select "**Adobe RGB (1998)**". This is the widest color gamut recognized in the industry.

* Toggle the Preview checkbox to determine if there is a significant color shift on the image due to any profile conversions. If so, it is possible that the image has been scanned and embedded with a pre-assigned profile that restricted its color space. In this case, it may be best to print from the already pre-assigned profile or attempt a rescan. Consult the scanner software preferences to ensure that the color space is set to Adobe RGB (1998).



2. Select the **Apple Menu> Chooser**. Locate and choose the proper **Epson** printer icon. Highlight a specific printer in the **Select a printer port location**. Close the Chooser window by clicking on the upper left corner square. Select **OK** to accept printer changes.

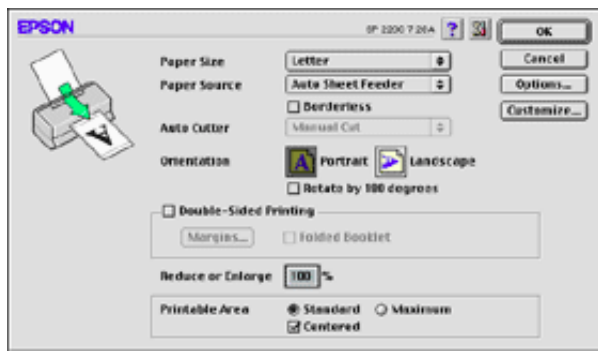


3. Go to **File>Print with Preview**. ✓ the **Center Image** box and ✓ **Show More Options** and toggle to Color Management. Select **Document** as the Source Space. In the Print Space, select a specific Epson printer/paper profile set to **Perceptual** and ✓ **Black Point Compensation** (Printer Color Management for non-Epson papers). Click **Page Setup**.

* The Document Source Space should read the ICC profile selected in Step 1.

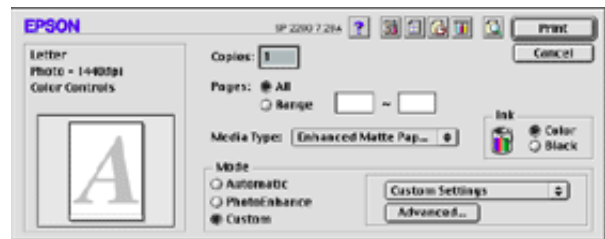


4. In the Page Setup window, select the Paper Size (Letter = 8x10"). Set the proper Paper Orientation of your image document. (Longer width = Landscape, Longer height = Portrait) In the Printable Area choose **Standard** and ✓ **Centered**. Select **OK**.



5. Click on **Print** in the Preview window. In the Epson Print window, choose the correct Media Type in the drop down menu (ex. Archival Matte Paper). In the Ink area select **Color**. Choose **Custom** Mode and press the **Advanced** button.

* Selecting only Black ink for printing B/W images will eliminate forms of metamerism, but produces less dpi precision resulting in detectable ink dots.



6. In the Advanced window, choose the Print Quality (720 dpi for drafts, 1440 dpi for portfolio work). In the Color Management area, select **No Color Adjustment** and press the **OK** button.



7. The Print window is now displayed. Select **Print** after all steps have been completed.



Note-

Fresh ink jet prints will take about 15 minutes to dry, and may appear slightly dark immediately after printing. Ink jet prints dry slightly up in density and will reveal crucial shadow detail once dry. This is the exact opposite of traditional photographic prints.

-Topics Of Relevance-

B/W Images

Certain color casts are detectable when printing b/w images on standard ink jet printers. This characteristic occurs because CMYK inks are used to reproduce and simulate black and white tones. Dedicated b/w piezography quadtone printers are a recent solution to eliminating unwanted color detection. These specially formulated systems are only available as a dedicated conversion kit for several designated Epson printers. The quadtone process employs high-performance quad black inks with additional hardware and software to achieve a neutral photographic result.

Metamerism

Metamerism is a color shift that is detectable when images are displayed under a variety of lighting conditions. Printers that employ pigments encounter more of a color shift than most standard dye-based ink jet printers. Final prints can take on color shifts ranging from a cool green to a warm magenta when displayed under a variety of light sources.

The Epson 2000P uses pigment based archival color inks expected to last 200 years. A high precision piezography process weaves a fine web of detail by sending an electronic charge through specially designed quartz crystals that change shape and squirt microscopic droplets onto a paper medium. Giclée is defined as a fully archival piezography process that employs paper mediums such as watercolor and canvas for reproduction.

For other methods of printing B/W images using Photoshop duotones and quadtones:

<http://www.luminous-landscape.com/tutorials/duotone.shtml>

For methods of printing Photoshop documents on a PC, consult the Photoshop Essays section at:

<http://computer-darkroom.co.uk/>

For more information on the Giclée process:

<http://www.digitalpainter.com/inkjetgiclee.htm>

For Epson printer descriptions and comparisons:

http://www.tssphoto.com/sp/dg/news/13_recommend.html

<http://www.epson.com>

Photo 820

Photo 870/890/1270/1280

[Photo 2200](#)

[Photo 2000P](#)

| [Home](#) | | [Scanning](#) | [Printing](#) | [Digital](#) | | [Tutorials](#) | | [Contact Info](#) |

© 2002-2006 by Tonal Range, L.L.C.. All Rights Reserved.
Copying of this material is strongly encouraged for the benefit of education.